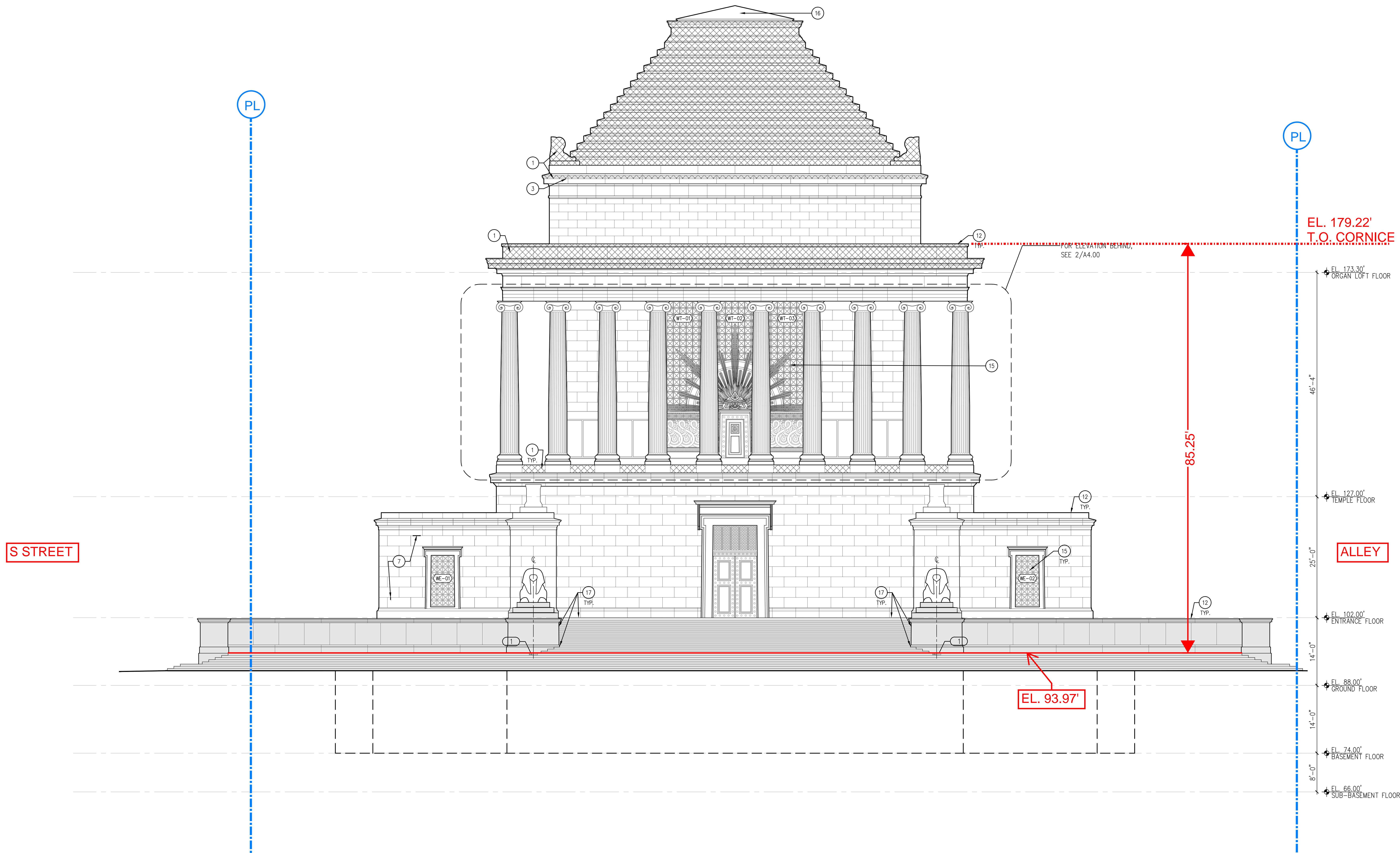


CODED NOTES

1 SIGNAGE FOR LOCATION OF ACCESSIBLE ENTRANCE, SEE 1/A9.60

# Temple Height - Measured from 16th Street NW



OWNER  
THE SUPREME COUNCIL 3P  
SCOTTISH RITE, SOUTHERN JURISDICTION  
1733 16TH STREET, NW  
WASHINGTON, DC 20009  
202-232-2979

ARCHITECT  
HARTMAN-COX ARCHITECTS, LLP  
1074 THOMAS JEFFERSON ST. NW  
WASHINGTON, DC 20007  
202-333-6446

GENERAL CONTRACTOR OF RECORD  
DPR CONSTRUCTION  
2941 FAIRVIEW PARK DR.  
FALLS CHURCH, VA 22042  
703-698-0100

HISTORIC PRESERVATION CONTRACTOR  
GRUNLEY CONSTRUCTION  
15029 SHADY GROVE ROAD, SUITE 500  
ROCKVILLE, MD 20850  
240-399-2000

STRUCTURAL ENGINEERS  
KCE STRUCTURAL ENGINEERS, PC  
1818 JEFFERSON PLACE, NW  
WASHINGTON, DC 20036  
202-833-8624

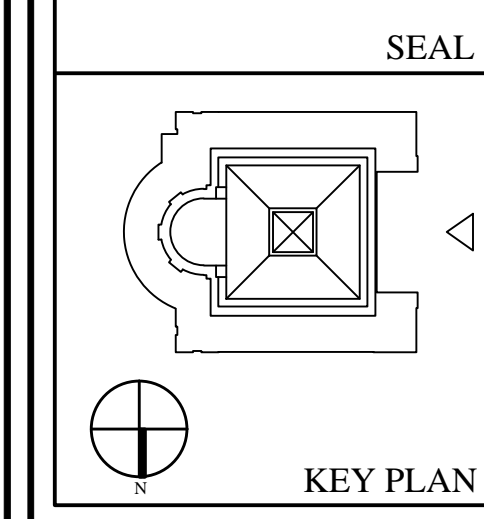
MECHANICAL ENGINEERS & CONTRACTOR  
SHAPIRO & DUNCAN, INC.  
1420 KOTHGEB DRIVE  
ROCKVILLE, MD 20850  
301-315-2139

ELECTRICAL ENGINEERS  
DESIGN TECH, INC.  
10410 KENSINGTON PARKWAY, #200  
KENSINGTON, MD 20895  
301-949-2688

ELECTRICAL CONTRACTOR  
E.C. ERNST, INC.  
1420 FITCHE MARLBORO ROAD  
CAPITOL HEIGHTS, MD 20743  
301-550-7770

SUBMISSION  
01.26.15 100% CONSTRUCTION DOCUMENTS

HOUSE OF THE TEMPLE  
1733 SIXTEENTH STREET NW  
WASHINGTON DC



DRAWING TITLE  
**WEST ELEVATION**

SCALE  
1/8"=1'-0"

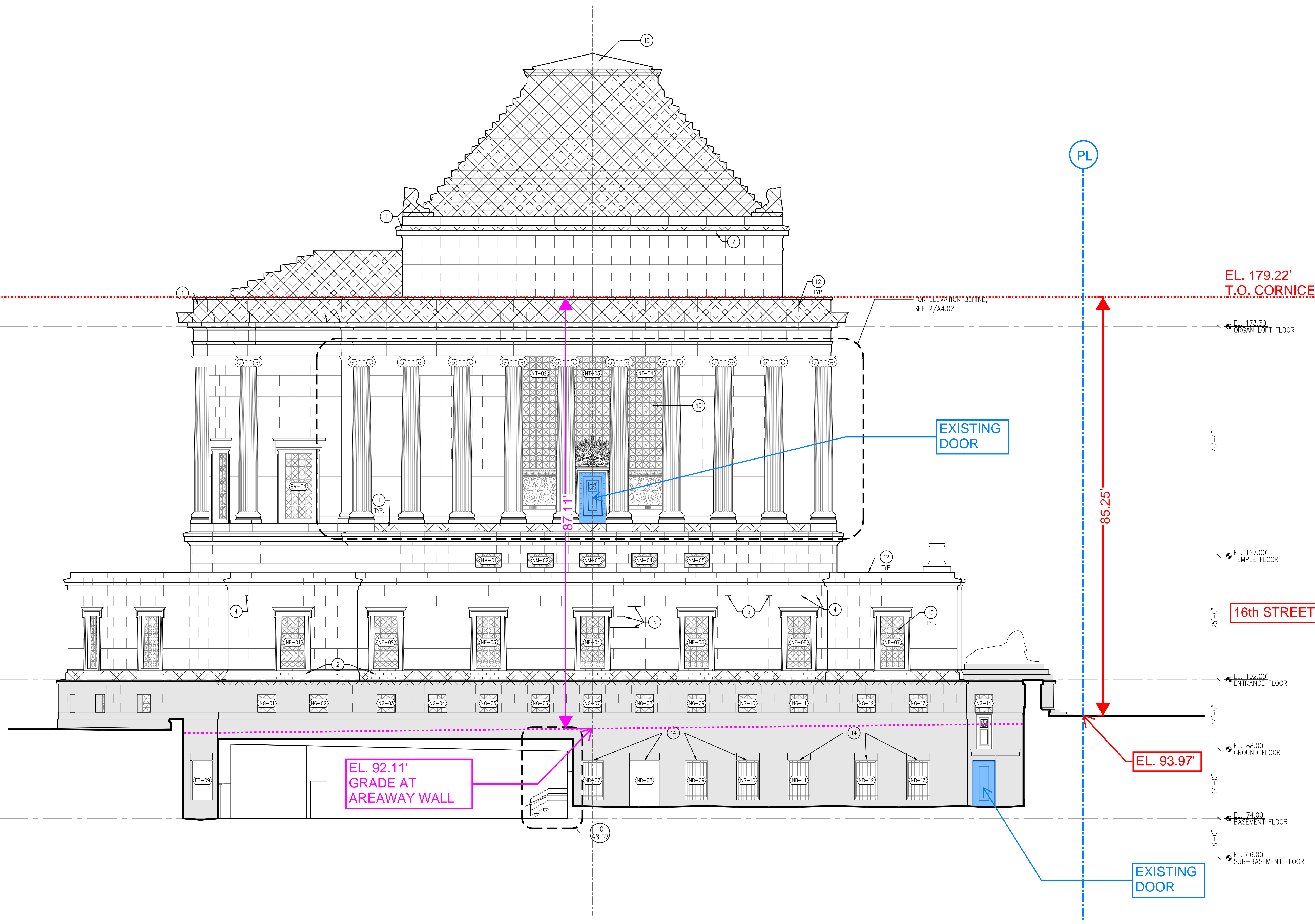
DATE  
JANUARY 26, 2015

A4.00

Board of Zoning Adjustment  
District of Columbia  
©2015 HCA, INC.

WEST ELEVATION  
1/8"=1'-0"

# Temple Height - Measured from S Street NW



OWNER  
THE SUPREME COUNCIL, 3P  
SCOTTISH RITE, SOUTHERN JURISDICTION  
1733 16TH STREET, NW  
WASHINGTON, DC 20009  
202-232-3579

ARCHITECT  
HARTMAN-COX ARCHITECTS, LLP  
1074 THOMAS JEFFERSON ST, NW  
WASHINGTON, DC 20007  
202-333-6446

GENERAL CONTRACTOR OF RECORD  
DPR CONSTRUCTION  
2941 FAIRVIEW PARK DR  
FALLS CHURCH, VA 22042  
703-698-0100

HISTORIC PRESERVATION CONTRACTOR  
GRUNLEY CONSTRUCTION  
15029 SHADY GROVE ROAD, SUITE 500  
ROCKVILLE, MD 20850  
240-599-2000

STRUCTURAL ENGINEERS  
KCE STRUCTURAL ENGINEERS, PC  
1818 JEFFERSON PLACE, NW  
WASHINGTON, DC 20036  
202-833-8624

MECHANICAL ENGINEERS & CONTRACTOR  
SHAPIRO & DUNCAN, INC.  
1420 KOTHGEB DRIVE  
ROCKVILLE, MD 20850  
301-315-2139

ELECTRICAL ENGINEERS  
DESIGNTECH, INC.  
10410 KENSINGTON PARKWAY, #200  
KENSINGTON, MD 20895  
301-949-2688

ELECTRICAL CONTRACTOR  
E.C. ERNST, INC.  
1420 RITCHE MARLBORO ROAD  
CAPITOL HEIGHTS, MD 20743  
301-560-7770

**SUBMISSION**  
01.26.15 100% CONSTRUCTION DOCUMENTS

HOUSE OF THE TEMPLE  
1733 SIXTEENTH STREET NW  
WASHINGTON DC

SEAL  
KEY PLAN

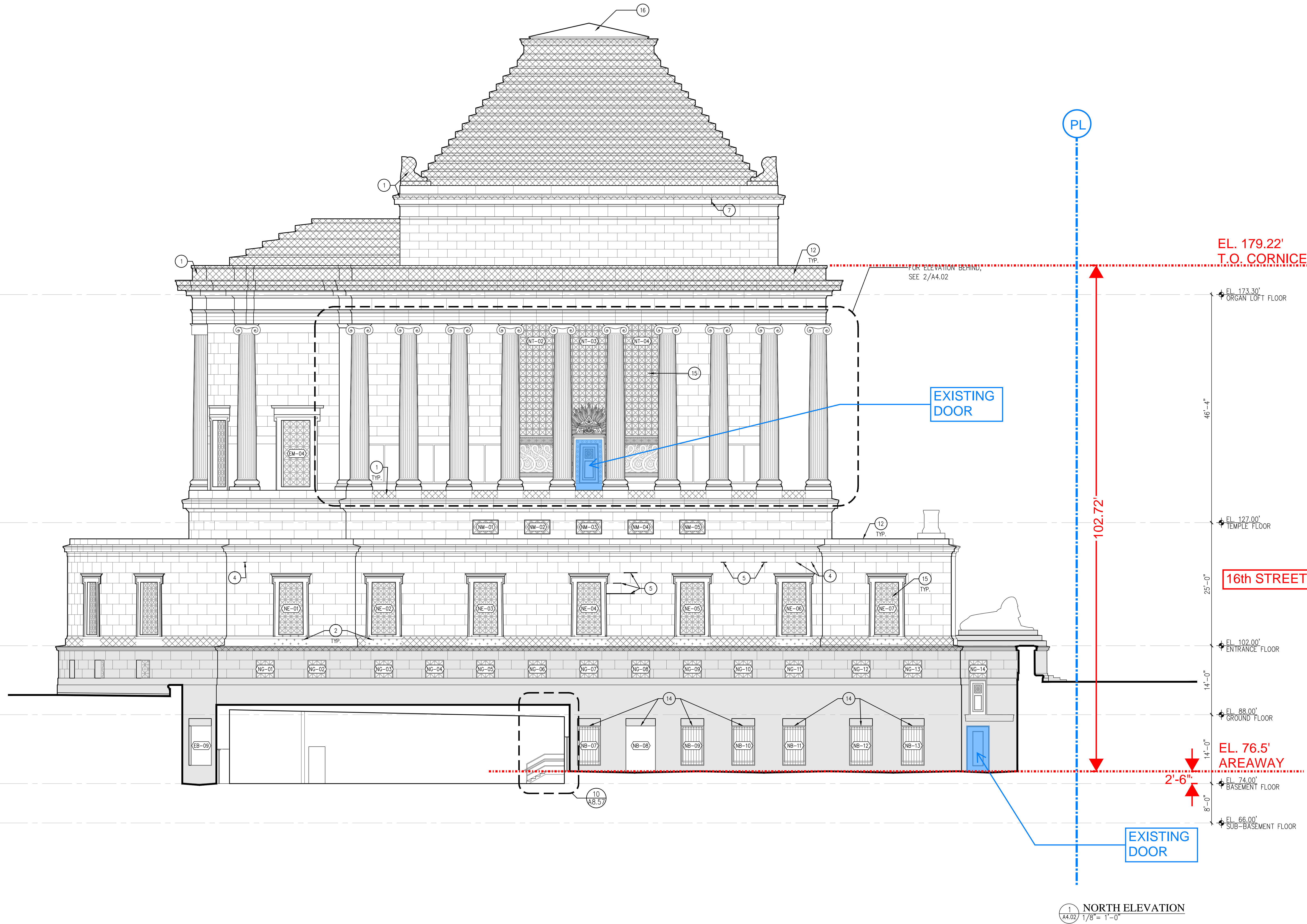
DRAWING TITLE  
**NORTH ELEVATION**

DATE  
JANUARY 26, 2015

SCALE  
1/8" = 1'-0"

**A4.02A**

# Temple Height - Measured from 16th Street NW (bottom of areaway)



1 NORTH ELEVATION  
A4.02 1/8" = 1'-0"

OWNER  
THE SUPREME COUNCIL, 3P  
SCOTTISH RITE, SOUTHERN JURISDICTION  
1733 16TH STREET, NW  
WASHINGTON, DC 20009  
202-232-3579

ARCHITECT  
HARTMAN-COX ARCHITECTS, LLP  
1074 THOMAS JEFFERSON ST, NW  
WASHINGTON, DC 20007  
202-333-6446

GENERAL CONTRACTOR OF RECORD  
DPR CONSTRUCTION  
2941 FAIRVIEW PARK DR.  
FALLS CHURCH, VA 22042  
703-698-0100

HISTORIC PRESERVATION CONTRACTOR  
GRUNLEY CONSTRUCTION  
15029 SHADY GROVE ROAD, SUITE 500  
ROCKVILLE, MD 20850  
240-599-2000

STRUCTURAL ENGINEERS  
KCE STRUCTURAL ENGINEERS, PC  
1818 JEFFERSON PLACE, NW  
WASHINGTON, DC 20036  
202-833-8624

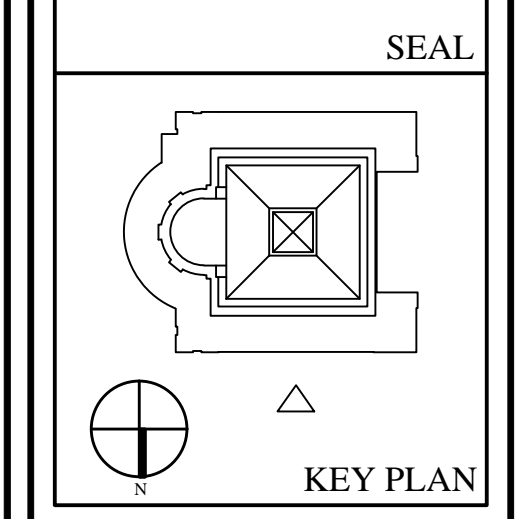
MECHANICAL ENGINEERS & CONTRACTOR  
SHAPIRO & DUNCAN, INC.  
1420 KOTHGEB DRIVE  
ROCKVILLE, MD 20850  
301-315-2139

ELECTRICAL ENGINEERS  
DESIGNTECH, INC.  
10410 KENSINGTON PARKWAY, #200  
KENSINGTON, MD 20895  
301-949-2688

ELECTRICAL CONTRACTOR  
E.C. ERNST, INC.  
1420 RITCHE MARLBORO ROAD  
CAPITOL HEIGHTS, MD 20743  
301-580-7770

SUBMISSION  
01.26.15 100% CONSTRUCTION DOCUMENTS

HOUSE OF THE TEMPLE  
1733 SIXTEENTH STREET NW  
WASHINGTON DC



DRAWING TITLE  
NORTH ELEVATION

DATE  
JANUARY 26, 2015

SCALE  
1/8" = 1'-0"

16"  
8"  
4"

A4.02B